

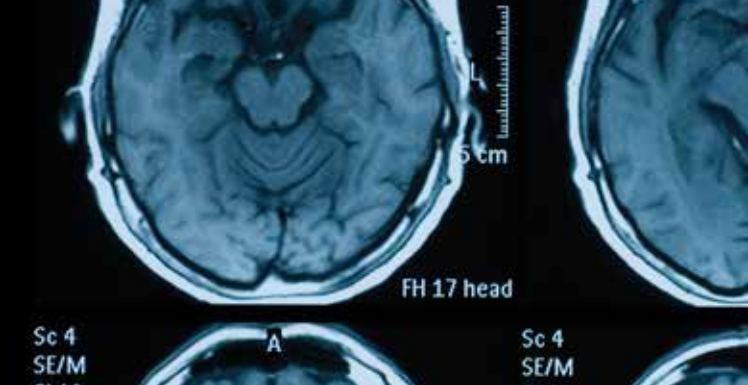


— nothing is more important than health



CT Information

Dundrum - Cork City - Naas



What is a CT scan?

Computed Tomography (CT) is a scanning technique that utilises X-rays at different angles to build up high resolution images of the body.

Several beams of X-rays are sent at different angles and collected by a bank of detectors. The X-ray source and detectors rotate around the patient as the table moves slowly through the centre.

The information gained from the detectors is sent to a computer system where detailed images of the body are then displayed.

Is it safe?

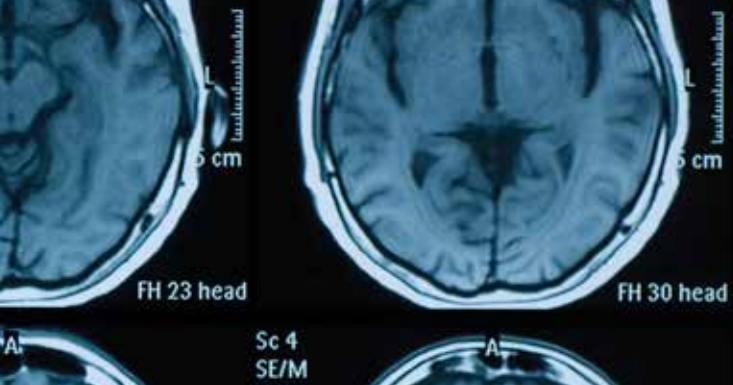
CT scans consist of a special type of X-ray and referring doctors are very careful to consider whether the benefits of the scan outweigh the risks.

CT scans should not be performed on pregnant women, so it is important to advise us if you are pregnant.

Please phone the clinic for advice prior to your CT scan, if you suffer from asthma, are a diabetic taking metformin (Glucophage), are breastfeeding, pregnant or are suffering from renal failure.

Will I need to have an injection or other preparation prior to the scan?

Some patients will require an injection of contrast to enhance the blood vessels in the area being scanned. For certain scans you will be asked to drink some water or oral contrast which has an aniseed taste to help give good definition to your stomach and the rest of your gut.



Your appointment

When you arrive at your chosen Affidea Ireland centre, you will be asked to complete some forms relating to your scan. You will then be asked to change into a gown and your belongings will be locked away safely. During the scan, the table will move through a wide hole in the CT scanner. The table moves to position you for the scan. It is important to remain still throughout the procedure. The Radiographer (clinician who operates the equipment) will be observing you throughout the examination and can hear you should you wish to speak with him/her. You will be in the scanning room for approximately 15 minutes.

When and where do I get the results?

The Radiologist (specialist medical consultant) will write a report to your referring doctor detailing the findings from the scan. The report will be sent to your referring doctor usually within 48 hours.

Any other questions?

If you have any other questions, worries or doubts, please do not hesitate to ask one of our team or contact us prior to your appointment.



— nothing is more important than health

LoCall: 1890 400 444 | T: 01 636 2300
E: appointments@affidea.com
W: affidea.ie

Ref: Aff-0033



Organization Accredited
by Joint Commission International